

LAMP INSTALLATION INSTRUCTIONS

1946 CHEVROLET

MOUNTING

Mount lamp on bumper support bar as shown in Figures 1, 4 or 9, depending upon type of mounting bracket supplied. If car is equipped with a stone guard, it may be necessary to reverse clamp as shown in Fig. 2, to bring

bearing surface for mounting bracket above top of stone guard. See Fig. 3 for suggested layout of lamp mounting bracket hole in stone guard.

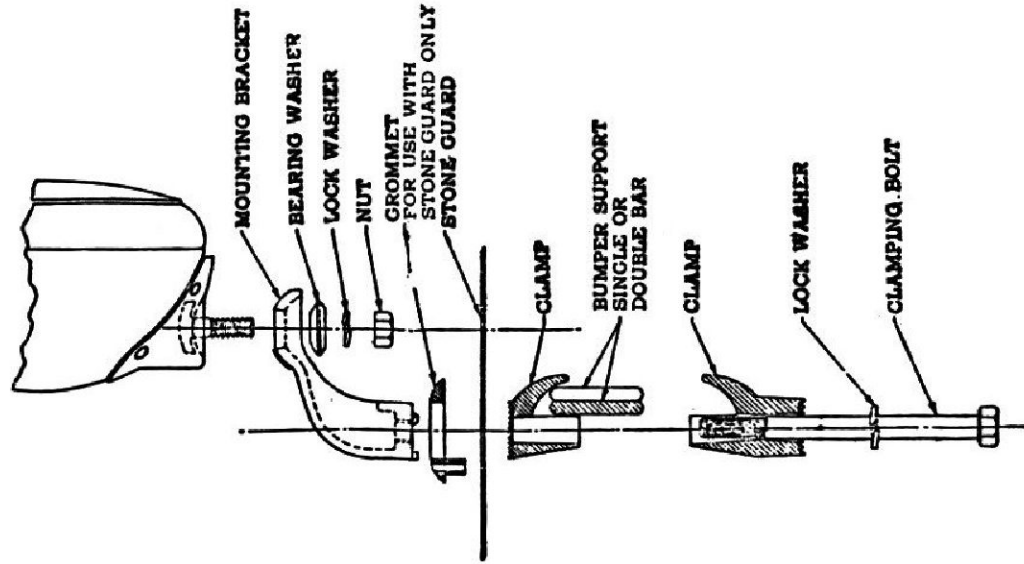


Fig. 1

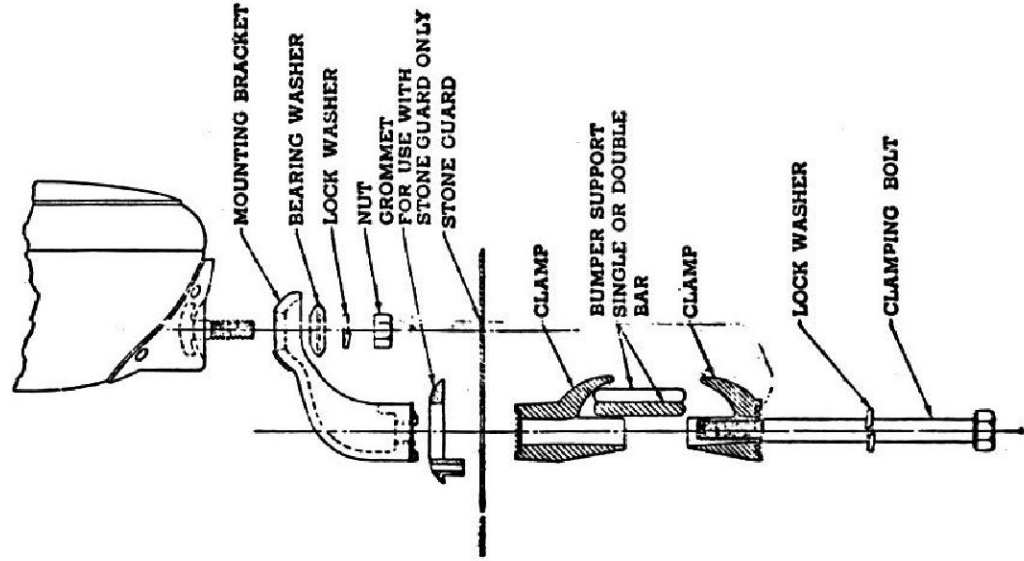


Fig. 2

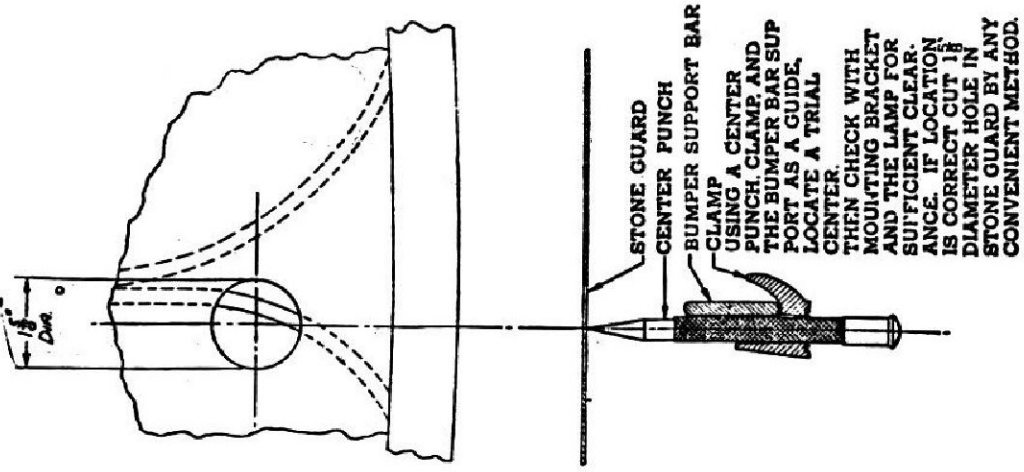


Fig. 3

USING A CENTER PUNCH, CLAMP AND PUNCH. CLAMP AND PUNCH AS A GUIDE. LOCATE A TRIAL CENTER. THEN CHECK WITH MOUNTING BRACKET AND THE LAMP FOR SUFFICIENT CLEARANCE. IF LOCATION IS CORRECT CUT 1/8" DIAMETER HOLE IN STONE GUARD BY ANY CONVENIENT METHOD.

1946 CHEVROLET
 Fog Light Installation
 Page 2

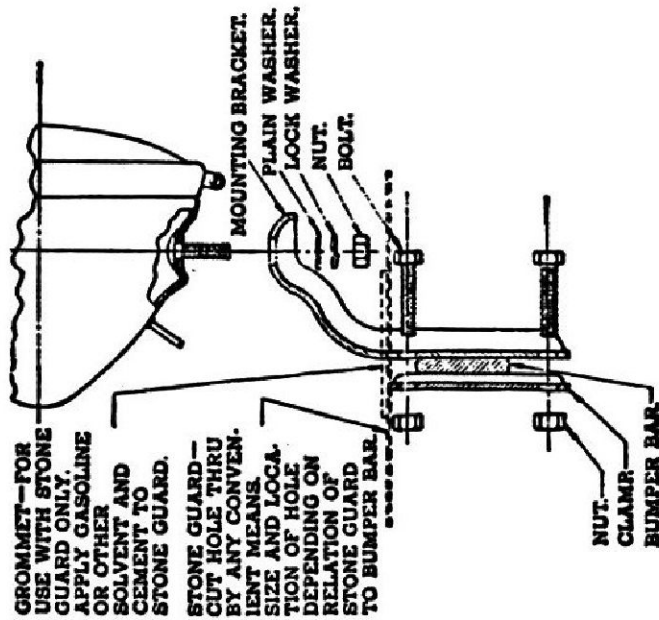


Fig. 4

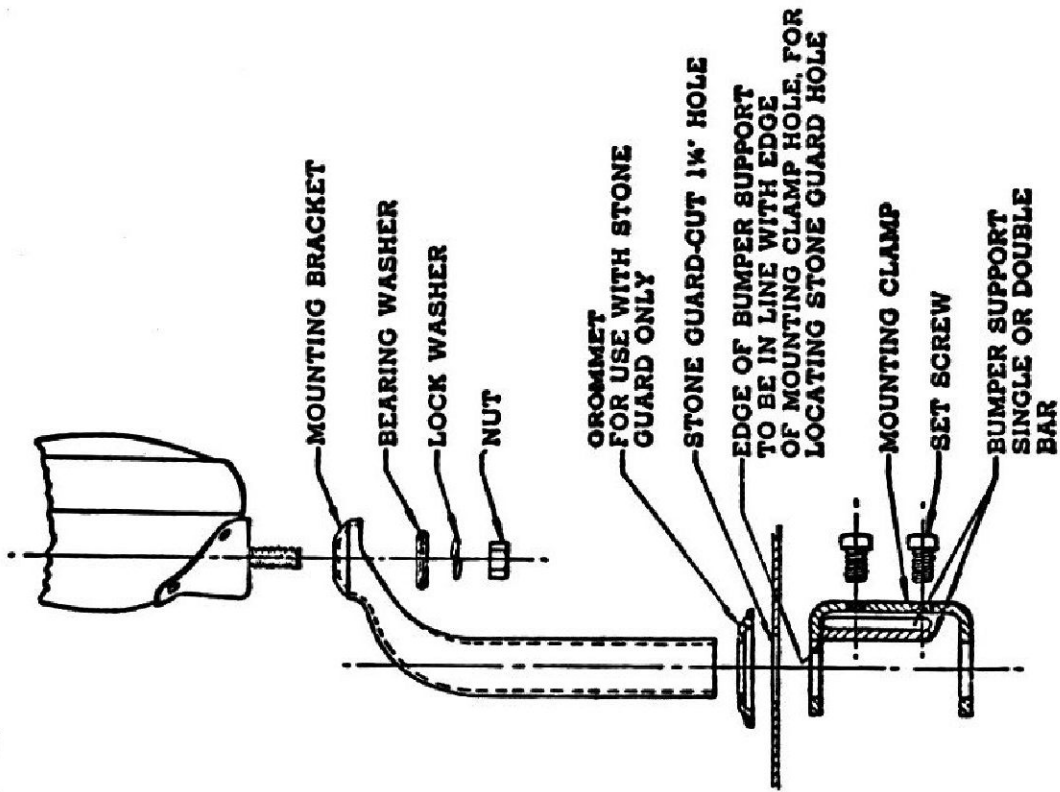


FIG. 9

1946 CHEVROLET Fog Light Installation Page 3

WIRING

WIRING

Feed wire along bumper support bar, under splash shield, along frame channel into the motor compartment, up to the instrument panel. Wire to switch as shown in Fig. 5 for a two-lamp installation. Wire to switch as shown in Fig. 6 for a single lamp installation. There is enough wire included on the lamp to make the ammeter to switch connection in the case of a two-lamp installation or the park-

ing terminal of headlamp switch to switch in case of a single lamp installation.

CAUTION: Care should be taken to see that wire is kept well away from sharp edges of sheet metal work.

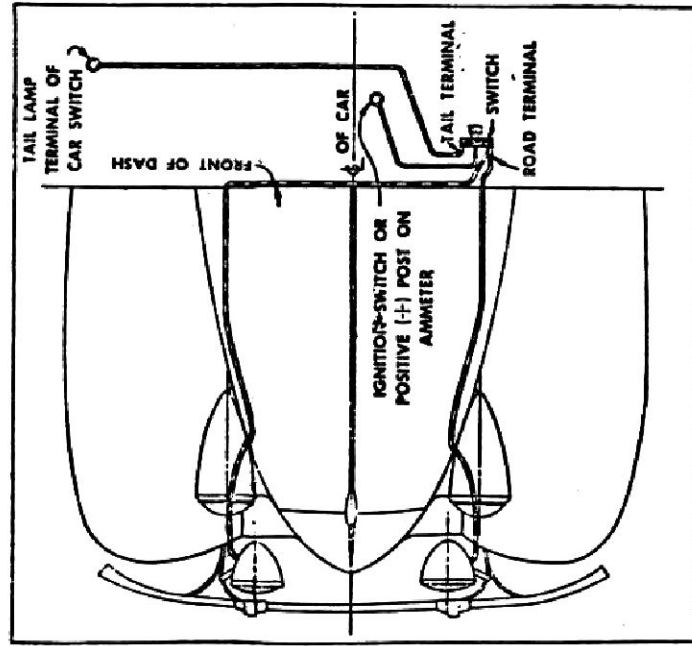


Fig. 5

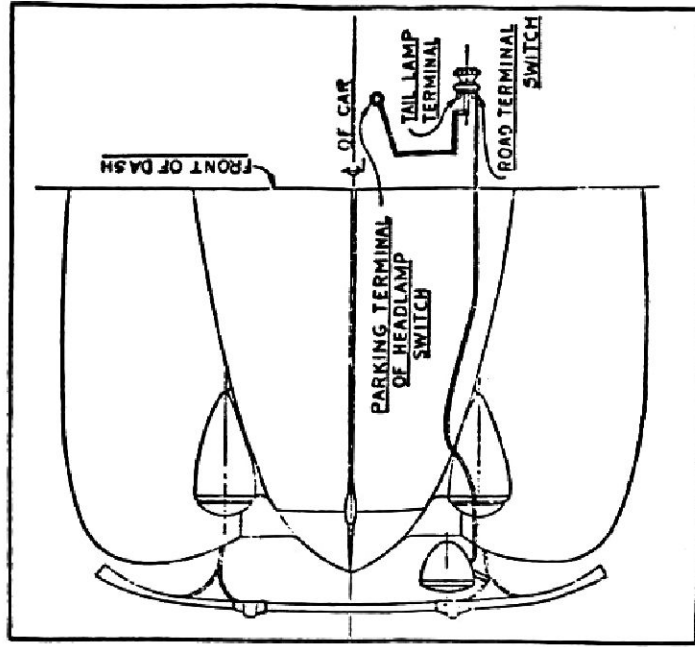


Fig. 6

1946 CHEVROLET Fog Light Installation

AIMING

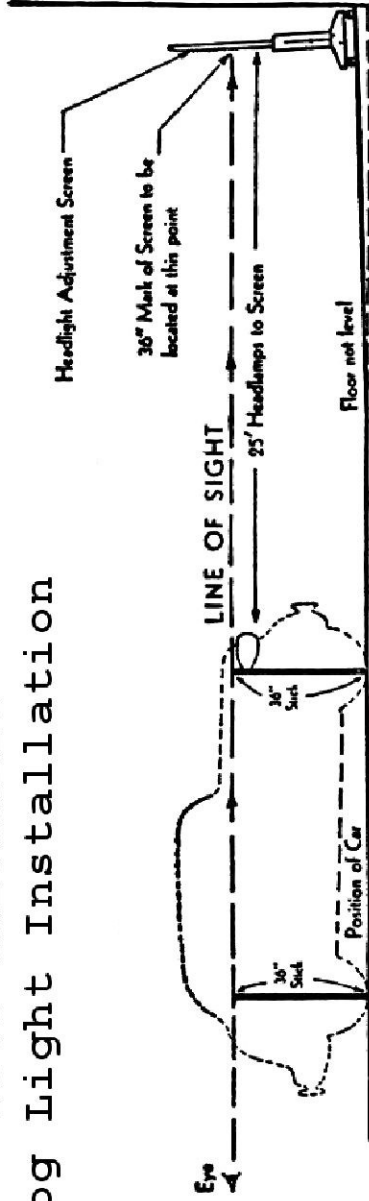
Place car on a level surface with a light colored screen or vertical surface twenty-five feet (25') ahead.

It is extremely important that the horizontal tape on the screen be at the proper height with reference to the surface on which the vehicle rests. Place two yardsticks as shown in Fig. 7 and locate a point on the screen in line with their tops. This should be marked 36 inches. Locate a 36" point on the other side of the screen in the same manner. From this level, other levels may be located the 36" level on the screen. From this level, other levels may be determined.

The car can be lined up with respect to this surface by sighting through the center of the rear window, over the middle of the radiator ornament, to a point on the screen. On cars equipped with a divided windshield, it is necessary to locate two points on a horizontal line by sighting from the center of the rear window, first past the left edge of the windshield divider and then past the right edge. A point midway between these points represents the center line of the car on the screen, from which vertical lines directly ahead of the Lamp centers can be located.

Locate a horizontal line on screen 4" below the level of the Lamp center. (Measurements to be referred to 36" level on screen and not to floor below screen.)

Aim each lamp (without removing lens) so that the top of the beam is at the horizontal line and



Screen Calibration

Fig. 7

centered sideways on the vertical line directly ahead of the lamp center. Tighten lamp nut securely. Fig. 8, below, shows correct placement of the beam pattern when aimed in accordance with these instructions.

NOTE: If this aiming conflicts with existing laws and regulations in your State, the legal requirements control and these instructions should be modified accordingly.

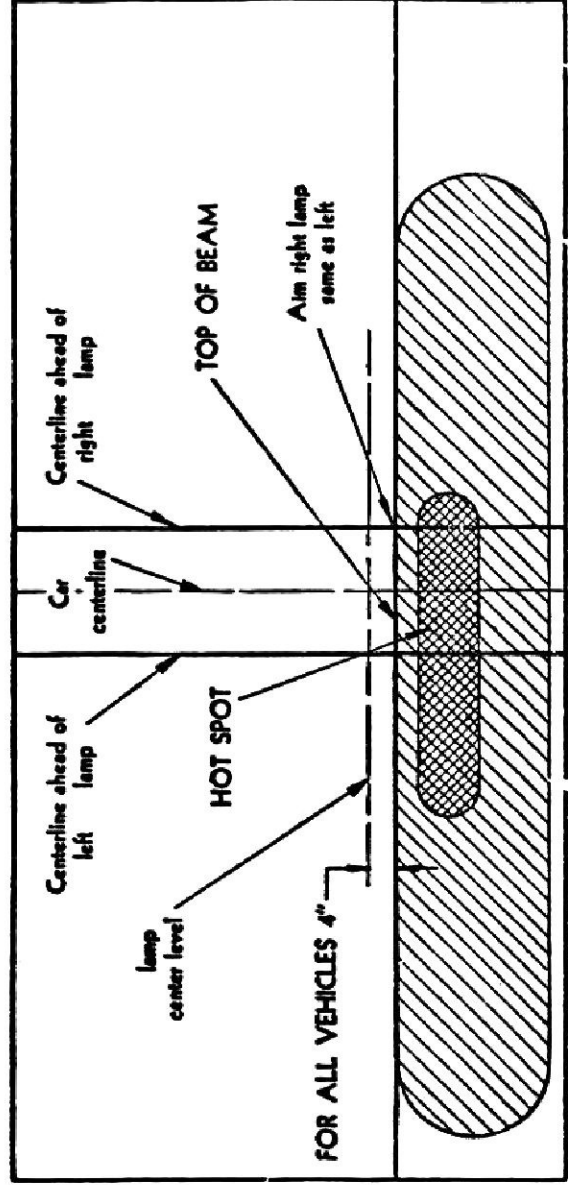


Fig. 8