



# UNITED MOTORS SERVICE

DIVISION OF GENERAL MOTORS CORPORATION

General Offices - Detroit

## AUTO RADIO BULLETIN

Bulletin 6D-853

Chevrolet 986771

Date: 9-15-53

Page 1

**SUBJECT: SERVICE INSTRUCTIONS — CHEVROLET TRUCK MODEL 986771**

### GENERAL

**MOUNTING**—All 1954 Chevrolet Trucks.

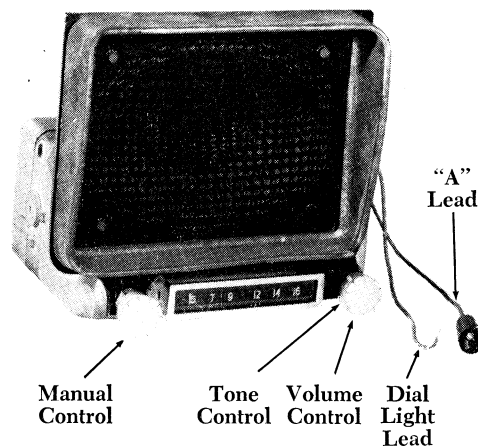
**TUBES**—Five, plus rectifier.

**SPEAKER**—6"x9" Elliptical, Permanent Magnet.

**TUNING**—Manual.

**ANTENNA TRIMMER COMPENSATION**—For Antennas Between 0.000058 - 0.000090 Mfd.

**TUNING RANGE**—540-1600 KC.



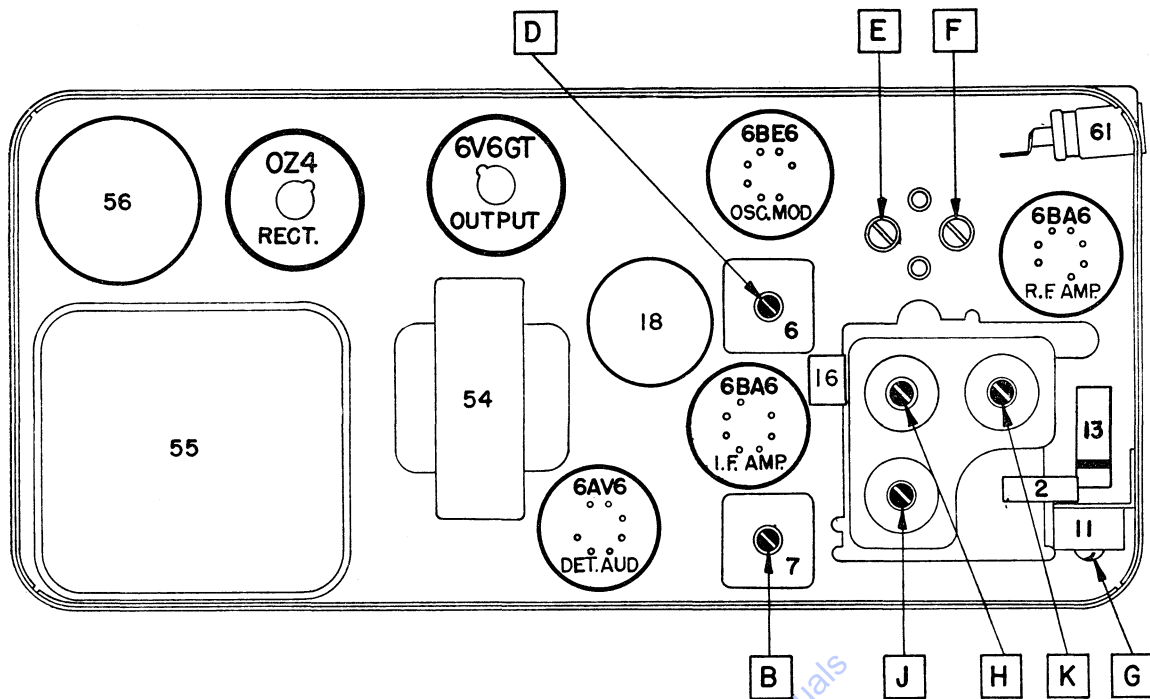
### ALIGNMENT PROCEDURE

Output Meter Connections ..... Across Voice Coil  
 Generator Return ..... To Receiver Chassis  
 Dummy Antenna ..... In Series With Generator  
 Volume Control Position ..... Maximum Volume  
 Tone Control Position ..... Treble  
 Generator Output ..... Minimum for Readable Indication

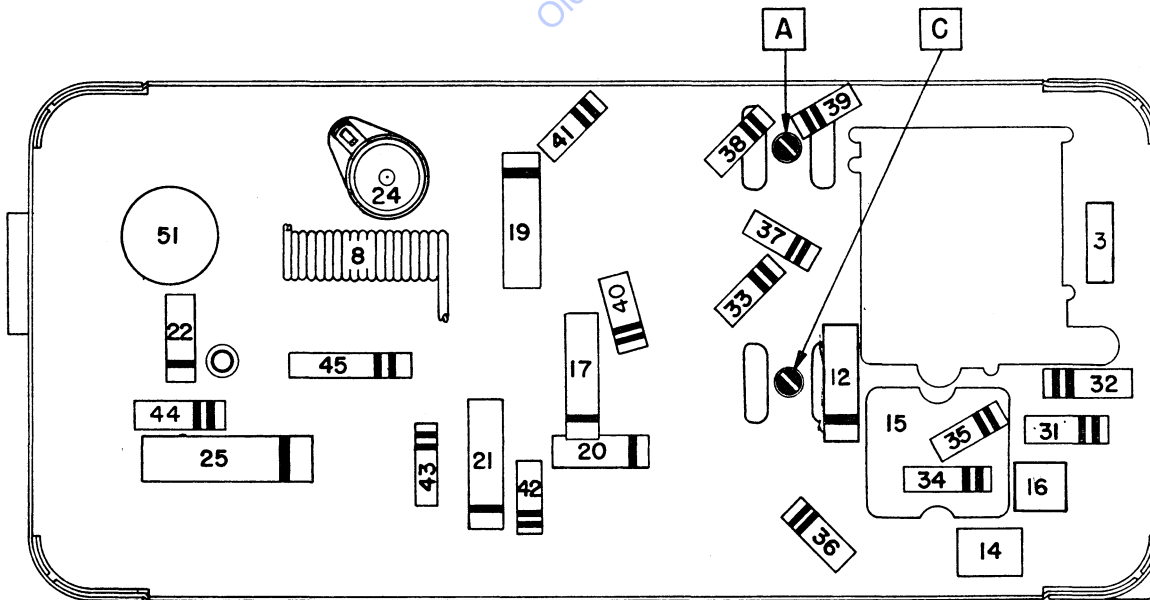
Steps	Series Capacitor or Dummy Antenna	Connect Signal Generator to	Signal Generator Frequency	Tune Receiver to	Adjust in Sequence For Max. Output
1	0.1 Mfd.	6BE6 Grid (Pin #7)	262 KC	High Frequency Stop	A, B, C, D
2	0.000082 Mfd.	Antenna Connector	1615 KC	High Frequency Stop	*E, F, G
3	0.000082 Mfd.	Antenna Connector	1000 KC	Signal Generator Signal	J, K
4	0.000082 Mfd.	Antenna Connector	1615 KC	High Frequency Stop	F, G
5	0.000082 Mfd.	Antenna Connector	900 KC	Signal Generator Signal	**

\*Before making this adjustment check mechanical setting of oscillator core "H." The rear of the core should be 1 25/32" from the mounting end of the coil form. (This measurement is readily made by inserting a suitable plug in the mounting end of the coil form.) Core adjustment should be made with an insulated screw driver.

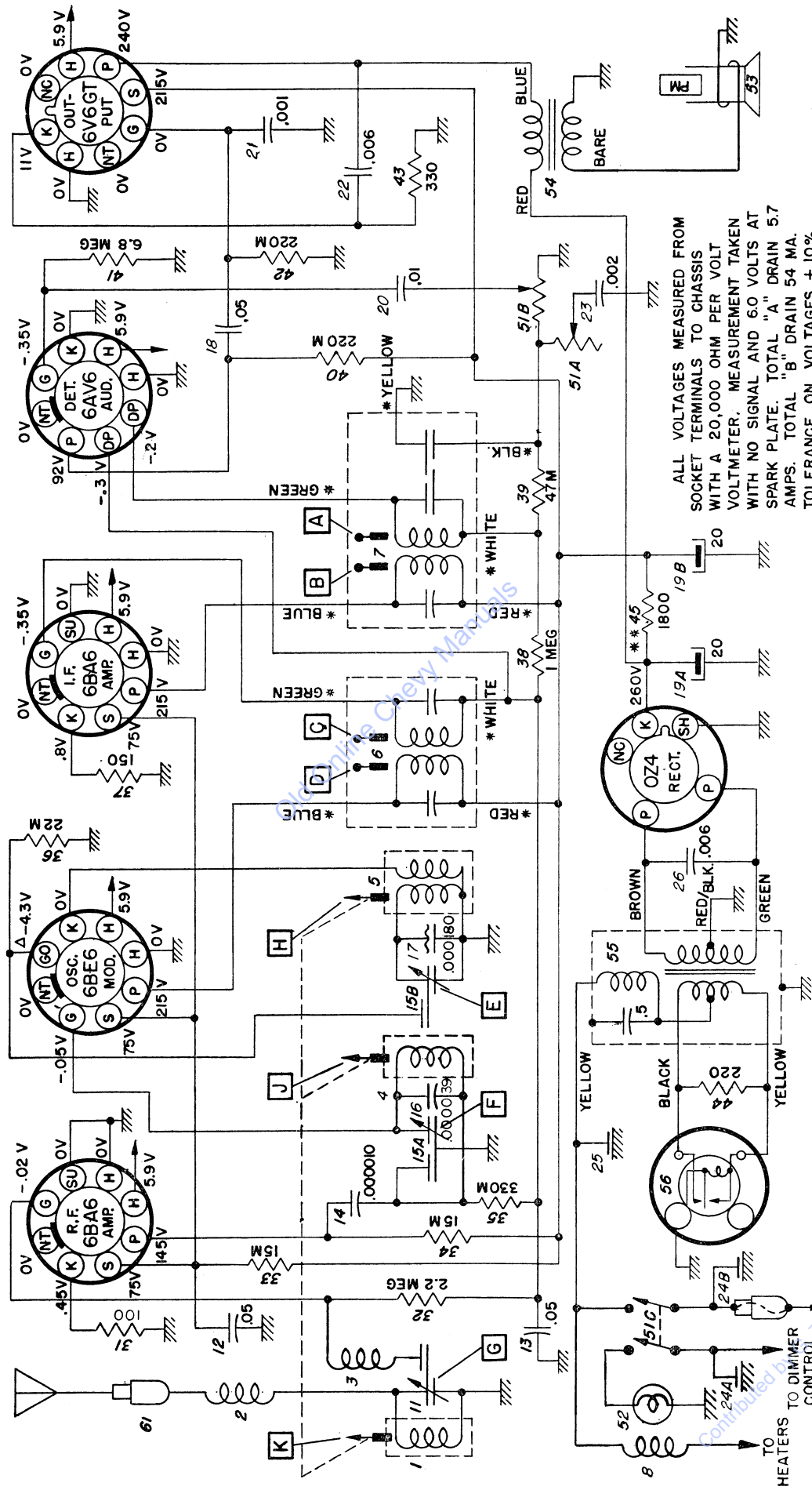
\*\*Tune in 900 KC signal and adjust pointer on the dial cord so that the pointer is on the 900 KC mark of the dial. This setting is to give the correct relationship between the pointer and dial when the radio is installed in a car. With the radio installed and the car antenna plugged in adjust the antenna trimmer "G" for maximum volume with the radio tuned to a weak station between 600 and 1000 KC (see sticker on case).



PARTS LAYOUT — TUBE VIEW



PARTS LAYOUT — CHASSIS VIEW

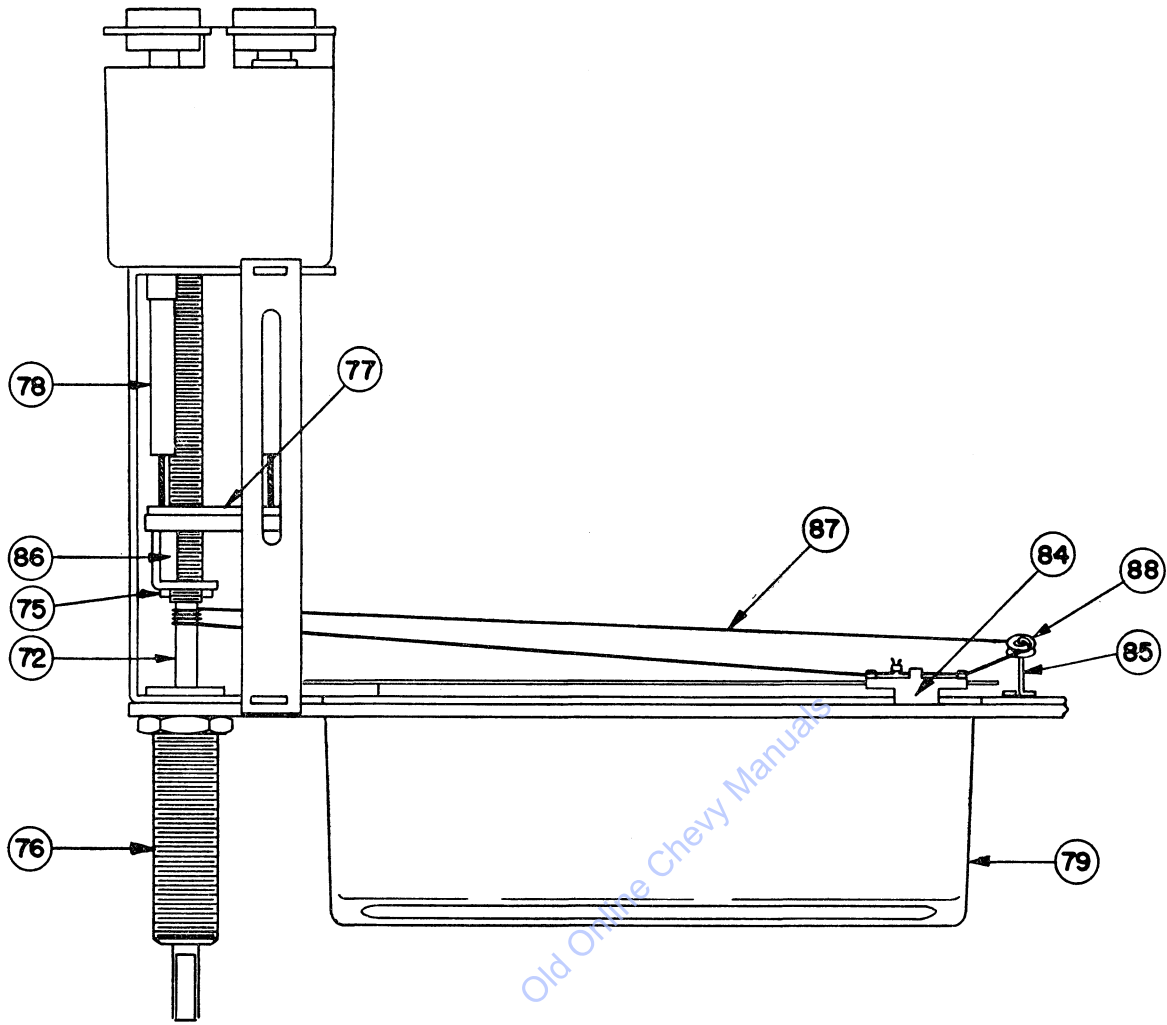


ALL VOLTAGES MEASURED FROM SOCKET TERMINALS TO CHASSIS WITH A 20,000 OHM PER VOLT VOLTMETER. MEASUREMENT TAKEN WITH NO SIGNAL AND 6.0 VOLTS AT SPARK PLATE. TOTAL "A" DRAIN 5.7 AMPS. TOTAL "B" DRAIN 54 MA. TOLERANCE ON VOLTAGES ± 10%.

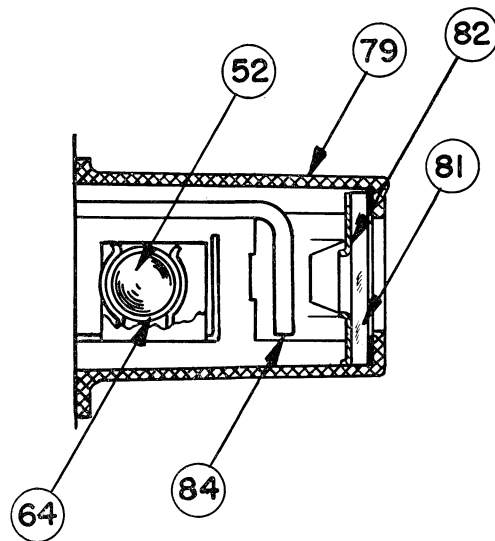
- \* \* - SEE SERVICE PARTS LIST FOR REPLACEMENT
- Δ - OSCILLATOR GRID VOLTAGE AT 1000 KC.
- \* - COLORS OF TERMINALS ON SERVICE PARTS.

CHEVROLET 986771

TO DIMMER CONTROL  
 TO HEATERS  
 "A" LEAD



TUNER



ESCUTCHEON CROSS SECTION

## 1954 CHEVROLET TRUCK MANUAL RADIO MODEL 986771

### SERVICE PARTS LIST

Illus. No.	Production Part No.	Service Part No.	Description
<b>ELECTRICAL PARTS</b>			
<b>Coils</b>			
1	7258914	7258914	Antenna
2	7255738	7255738	Antenna Series Choke
3	7240251	7240251	Antenna Spark Choke
4	7258914	7258914	R.F.
5	7258911	7258911	Oscillator
6	7258188	1218725	1st I.F.
7	7258198	1218726	2nd I.F.
8	7263864	1217846	Hash Choke
<b>Capacitors</b>			
11	7262799	7262799	Antenna Trimmer Capacitor
12	7236841	6512	.05 Mfd 400 V. Tubular
13	7236842	6512	.05 Mfd 200 V. Tubular
14	1218371	G-100	.000010 Mfd Molded Mica
15	7242454	7242454	Dual Trimmer
15A			R.F. Section
15B			Oscillator Section
16	7258221	G-390	.000039 Mfd Mica
17	1220162	7257424	.000180 Mfd Compensating
18	7236841	6512	.05 Mfd 400 V. Tubular
19	7262905	6309	Electrolytic
19A			20 Mfd 400 V.
19B			20 Mfd 400 V.
20	1208600	6533	.01 Mfd 600 V. Tubular
21	1218883	6527	.001 Mfd 600 V. Tubular
22	1219084	H-602	.006 Mfd 800 V. Tubular
23	1219632	6528	.002 Mfd 600 V. Tubular
*24	1220308	1220308	Spark Plate Assembly
24A			Dial Light Section
24B			"A" Lead Section
25	1217848	1217848	Chassis Plate Capacitor
26	7240906	H-602	.006 Mfd 1600 V. Tubular
<b>Resistors</b>			
31	1213217	A-101	100 ohms ½W Insulated
32	1211147	A-225	2.2 Megohms ½W Insulated
33	7233653	C-153	15,000 ohms 2W Insulated
34	7237595	B-153	15,000 ohms 1W Insulated
35	7240732	A-334	330,000 ohms ½W Insulated
36	1211192	A-223	22,000 ohms ½W Insulated
37	1213220	A-151	150 ohms ½W Insulated
38	7238873	A-105	1 Megohms ½W Insulated
39	7240731	A-473	47,000 ohms ½W Insulated
40	1213479	A-224	220,000 ohms ½W Insulated
41	7241937	A-685	6.8 Meg. ½W Insulated
42	1213479	A-224	220,000 ohms ½W Insulated
43	7233773	B-331	330 ohms 1W Insulated
44	1219738	B-221	220 ohms 1W Insulated
45	1214753	{ C-272 B-562	1800 ohms 2W Wire Wound (Replace with 2700 ohms 2W and 5600 ohms 1W in parallel.)
<b>Tubes</b>			
	1217690	6BA6	6BA6
	1217691	6BE6	6BE6
	1218506	6AV6	6AV6
	1213793	6V6GT	6V6GT
	1211924	OZ4	OZ4

## 1954 CHEVROLET TRUCK MANUAL RADIO MODEL 986771 (Con't.)

### SERVICE PARTS LIST

Illus. No.	Production Part No.	Service Part No.	Description
Miscellaneous			
*51	7264211	7264211	Control, Volume, Tone, and Switch
51A			Tone Control
51B			Volume Control
51C			Switch
52	187189	44	Lamp — Dial
53	7262198	6112	Speaker 6" x 9" Elliptical
54	7262812	6062	Transformer — Output
55	7261386	1220163	Transformer — Power
56	7239124	8542	Vibrator

### MECHANICAL PARTS

#### Chassis

61	7239475	7239475	Socket — Antenna
	7258073	6072	Socket — 7 Pin Miniature
	7236279	6070	Socket — Octal Tube
	7239125	6036	Socket — Vibrator
64	7262904	1220179	Socket — Dial Light

#### Tuner

71	1220165	1220165	Tuning Shaft Assembly
72			Tuning Shaft
73	7257400	7257400	Spring Washer
74	7258783	7258783	"C" Washer
76	7262907	7262907	Bushing—Manual Drive Shaft
77	7262919	7262919	Core Bar Assembly
78	7259201	7259201	Core—Iron Tuning
*79	7264054	7264054	Escutcheon Assembly
*80	7264045	7264045	Dial Gasket
*81	7264055	7264055	Dial
*82	7264056	7264056	Dial Backplate
83	7262840	7262840	Spring—Dial Retainer
*84	7264049	7264049	Pointer Assembly
85	7262917	7262917	Spring—Dial Cord Guide
86	7262922	7262922	Spring—Manual Drive
87	85610-R	**6040	Cord—Dial
88	7263593	7263593	Pulley—Dial Cord Drive

### INSTALLATION PARTS

	1911095	6030	Capacitor—Generator
	1910147	6030	Capacitor—Ignition Coil
	1917580	6030	Capacitor—Voltage Regulator
	147685	147685	Fuse
*	7263887	7263887	Knob Assembly—Control
*	7263886	7263886	Knob—Dummy
*	7263890	7263890	Knob—Tone Control
*	7263892	7263892	Mounting Brace—Lower
*	7263889	7263889	Mounting Brace—Upper
	494786	6009	Collector—Static
*	7263981	7263981	Trim Plate
	1220246	1220246	Fuse Holder Assembly

\* Parts first used in 1954.

\*\* Dial Cord is 18 inches long. 6040 is 100 foot spool of this cord.