



UNITED MOTORS SERVICE

DIVISION OF GENERAL MOTORS CORPORATION

Central Offices - Detroit

| | |
|-------------|---------|
| Bulletin | 6D-801 |
| Chevrolet | 985793 |
| Date | 7-15-56 |
| Page | 1 |
| FIRST ISSUE | |

DELCO AUTO RADIO INSTALLATION BULLETIN

SUBJECT: INSTALLATION INSTRUCTIONS FOR

1946 - 7 - 8 CHEVROLET MODEL 985793

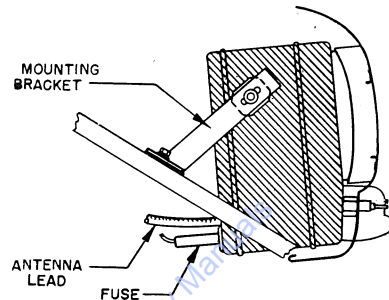


Fig. 1

1946-47 Chevrolet Model 985793

Suppression Equipment—

- Distributor suppressor (Part #6003)
- Ammeter capacitor (Part #6016)
- Generator capacitor (Part #6015)
- Static Collector (Part #6009)
- Ignition coil capacitor (Part #6014)

Mounting:

The radio is held in place by one mounting nut on the right side of the radio, and the two control bushing hex nuts.

The "A" lead (Part #5274211) connects to the socket in the back of the radio and to the discharge side of the ammeter.

The antenna connects to the left side of the radio and the trimmer is located nearby. The trimmer should be peaked on a weak station near 1400 Kc with the antenna fully extended.

Install the static collectors in the dust caps

of the front wheels being careful that the plane of the button is parallel with the open side of the dust cap; this will prevent the collectors from making a lopsided contact with the wheel spindle, which would cause unequal wear and shorten the life of the collector. Remove any grease from the lathe center-hole on the axle shaft to insure a good electrical contact. Bend any cotter pins so as to give the necessary clearance for the collector contact.

To install static eliminator powder, place the contents of one small envelope of static eliminator powder (Part #986035) in an injector (part #986033). Deflate the tire and attach the injector to the tire valve. Inflate the tire to its proper pressure by passing the air through the injector, repeat for each tire.

A 14 amp. fuse (Part #147685) is used to protect the radio.

UNITED MOTORS SERVICE

DIVISION OF GENERAL MOTORS CORPORATION

Central Offices - Detroit



DELCO AUTO RADIO INSTALLATION BULLETIN

SUBJECT: INSTALLATION INSTRUCTIONS FOR

1946 - 7 CHEVROLET MODEL #985986

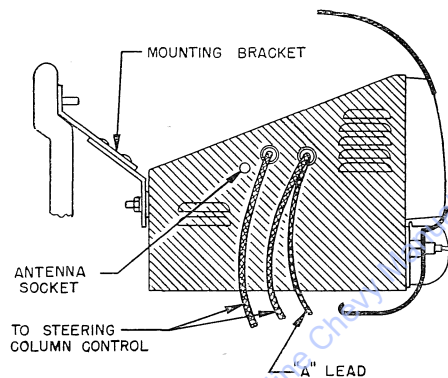


Fig. 2

1946 - 7 Chevrolet Model 985986

Suppression Equipment—

- Injector, tin static powder (Part #6036)
- Suppression powder (Part #6025)
- Static collector (Part #6009)
- Generator capacitor (Part #6015)
- Distributor adapter (Part #6008)
- Distributor suppressor (Part #6002)
- Ignition coil capacitor (Part #6014)

Mounting:

The radio is held in place by a heavy

bracket on the rear of the radio, and the two control bushing hex nuts.

The "A" lead (Part #1216211) connects from the fuse holder on the discharge side of the ammeter to the right side of the radio.

A steering column control is mounted by a strap to the right side of the radio.

For static collector or static suppression powder installation refer to Model 985793.

A 30 amp. fuse (Part 147686) is used for protection of the radio.

DELCO AUTO RADIO INSTALLATION BULLETIN

SUBJECT: INSTALLATION INSTRUCTIONS FOR

1947-48-49 CHEVROLET TRUCK MODEL 986067

1950-51-52-53 CHEVROLET TRUCK MODEL 986443

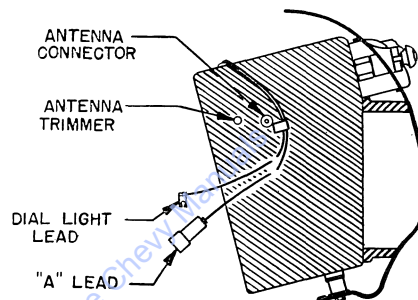


Fig. 3

1947-48-49 Chevrolet Model 986067

1950-51-52-53 Chevrolet Truck Model 986443

Suppression Equipment—

- Static Collector (Part #6009)
- Ammeter Capacitor (Part #6016)
- Generator Capacitor (Part # 6030)
- Distributor Suppressor (Part #6003)
- Ignition Coil Capacitor (Part #6030)
- Regulator Capacitor (Part #6030)

Mounting—

The radio is held in place by two bolts with mounting spacers at the bottom of the set and the two control bushing hex nuts.

The "A" lead (Part #1217950) runs from the right side of the set (Model 986067)—from the

top of the set (Model 986443) and connects to the discharge side of the ammeter.

The dial light lead runs from the right side of the set (Model 986067)—from the top of the radio (Model 986443) and is connected to the instrument panel light terminal on the light switch.

The antenna connects to the right side of the radio and the trimmer is located beside it. The trimmer should be peaked to a weak station near 1400 Kc with the antenna fully extended.

For static collector or static suppression powder installation, refer to Model 985793.

A 14 amp. fuse (Part #147685) is used for protection of the set.

UNITED MOTORS SERVICE

DIVISION OF GENERAL MOTORS CORPORATION

Central Offices - Detroit



DELCO AUTO RADIO INSTALLATION BULLETIN

SUBJECT: INSTALLATION INSTRUCTIONS FOR

1949 CHEVROLET MODEL 986240

1949 CHEVROLET MODEL 986241

1950 CHEVROLET MODEL 986388

1950 CHEVROLET MODEL 986389

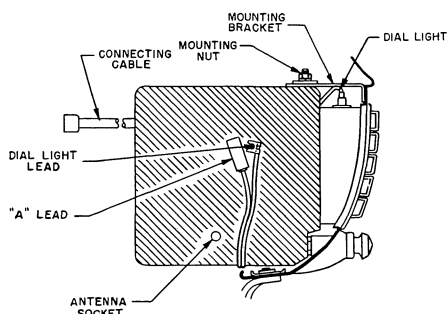


Fig. 4

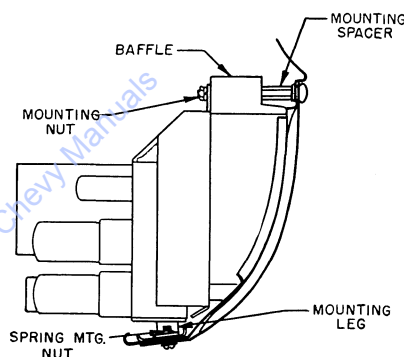


Fig. 4A

1949 Chevrolet Models 986240 and 986241
1950 Chevrolet Models 986388 and 986389

Suppression Equipment—

- Static Collector (Part #6009)
- Ammeter Capacitor (Part #6030)
- Generator Capacitor (Part #6030)
- Distributor Suppressor (Part #6003)
- Regulator Capacitor (Part #6030)
- Ignition Coil Capacitor (Part #6030)

Mounting—

The R.F. unit is held in place by a stud in the top of the radio and the two dual control bushing hex nuts. The power supply is held in place by four mounting bolts near each corner.

The audio cable connects to the left side of the R. F. unit and the "A" lead connects to

the ignition switch on all models except Model #986388 which has the "A" lead connecting to a terminal on the instrument panel junction block.

The dial light lead connects to a terminal on the junction block on all models except Model #986241 which has the dial light lead connecting to the instrument panel light terminal on the light switch.

The antenna connects to the right side of the R. F. unit and the trimmer is located on the bottom of the unit. The trimmer should be peaked on a weak station near 1400 Kc with the antenna fully extended.

For installation of static collectors or static suppression powder, refer to Model 985793.

A 14 amp. fuse (Part 147685) is used for protection of the set.



UNITED MOTORS SERVICE

DIVISION OF GENERAL MOTORS CORPORATION

Central Offices - Detroit

Bulletin 6D-801
Chevrolet 986515
Date 986516
Page 7-15-56
5
FIRST ISSUE

DELCO AUTO RADIO INSTALLATION BULLETIN

SUBJECT: INSTALLATION INSTRUCTIONS FOR

1951-2 CHEVROLET MODEL 986515

1951-2 CHEVROLET MODEL 986516

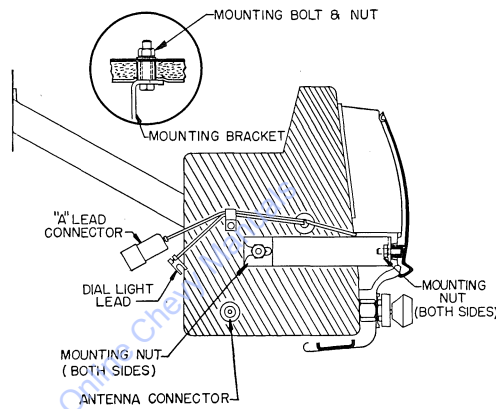


Fig. 5

1951-52 Chevrolet Model 986515

Suppression Equipment—

- Ammeter Capacitor (Part #6030)
- Generator Capacitor (Part #6030)
- Ignition Coil Capacitor (Part #6030)
- Regulator Capacitor (Part #6030)
- Distributor Suppressor (Part #6003)

Mounting—

A 14 amp. fuse (Part #147685) is used for protection of the set.

The radio is held in place by two studs, one on each side of the radio and the two control bushing hex nuts. The stud on the left fastens to a brace that is bolted to the firewall while the stud on the right connects to a brace that connects to the instrument panel.

The dial light lead comes from the right side of the radio and is connected to the instrument light terminal on the light switch.

The "A" lead extends from the right side of the receiver and connects to the accessory junction block through the fuse holder.

The antenna plugs into the right side of the set and the trimmer should be peaked on a weak station near 1400 Kc with the antenna fully extended.

1951-52 Chevrolet Model 986516

Suppression Equipment—

- Generator Capacitor (Part #6030) .5 mfd.
- Ignition Coil Capacitor (Part #6030) .5 mfd.
- Regulator Capacitor (Part #6030) .5 mfd.
- Static Collector (Part #6009)
- Distributor Suppressor (Part #6003)

Mounting—

For installation of static collectors or static suppression powder, refer to Model 985793.

The antenna trimmer should be peaked to a weak station near 1400 Kc with the antenna fully extended. The antenna connects to the right side of the radio and the trimmer must be adjusted from the top.

A 14 amp. fuse (Part #147685) is incorporated for protection of the set.

UNITED MOTORS SERVICE

DIVISION OF GENERAL MOTORS CORPORATION

Central Offices - Detroit



DELCO AUTO RADIO INSTALLATION BULLETIN

SUBJECT: INSTALLATION INSTRUCTIONS FOR

1953-4 CHEVROLET MODEL 986668
1953-4 CHEVROLET MODEL 986669
1953-4 CHEVROLET MODEL 3706551

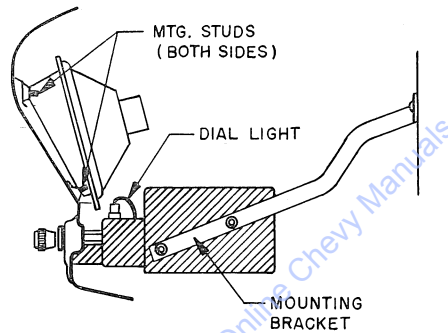


Fig. 6

1953-54 Chevrolet Model 986668
1953-54 Chevrolet Model 986669

Suppression Equipment—

Generator Capacitor (Part #6030)
Ignition Coil Capacitor (Part #6030)
Regulator Capacitor (Part #6030)
Static Collector (Part #6009)

Mounting—

The radio is held in place by two studs on the left side of the radio, and the two control bushing hex nuts. The speaker is held in place by four studs on the grille.

The speaker plugs into the left side of the radio on Model 986668 and into the top of the radio on Model 986669.

The "A" lead (Part #1218728) extends from the right side of the radio and connects to the fuse assembly on the junction block.

The dial light connects to the instrument panel light terminal on the light switch.

The antenna plugs into the right side of the radio. The trimmer is located on the bottom

of the radio and it should be peaked to a weak station between 600 and 1000 Kc with the antenna fully extended.

For installation of static collectors or static elimination powder, refer to Model 985793.

A 14 amp. fuse (Part #147685) is employed for the protection of the set.

1953-4 Chevrolet Model 3706551

Suppression Equipment—

Generator Capacitor (Part #6030)
Static Collector (Part #6009)

Mounting—

(Same as Model 986668 with the following exceptions)

The speaker and power supply unit is held in place by the three speaker grille studs.

The "A" lead (Part #1220246) is connected to a terminal on the junction block.

The speaker and power supply unit plugs into the left side of the set.

The antenna connects to the left side of the radio.

DELCO AUTO RADIO INSTALLATION BULLETIN

SUBJECT: INSTALLATION INSTRUCTIONS FOR

1954 CHEVROLET TRUCK MODEL 986771

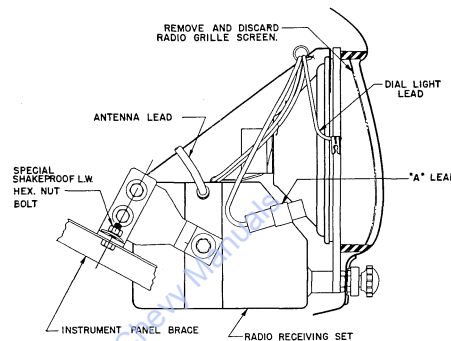


Fig. 7

1954 Chevrolet Truck Model 986771

Suppression Equipment—

- Generator Capacitor (Part #6030)
- Ignition Coil Capacitor (Part #6030)
- Regulator Capacitor (Part #6030)
- Static Collector (Part #6009)

Mounting—

The radio is held in place by a positioning screw on both sides of the radio and the two control bushing hex nuts.

The "A" lead (Part #1220246) connects to a terminal on the junction block.

The dial light lead connects to the instrument panel light switch terminal on the light switch.

The antenna connects to the right side of the radio and the trimmer is easily accessible from the bottom. The trimmer should be peaked to a weak station between 600 and 1000 Kc.

For the installation of static collectors or static elimination powder, refer to Model 985793.

A 14 amp. fuse (Part #147685) is employed for protection of the radio.

UNITED MOTORS SERVICE

DIVISION OF GENERAL MOTORS CORPORATION

Central Offices - Detroit



DELCO AUTO RADIO INSTALLATION BULLETIN

SUBJECT: INSTALLATION INSTRUCTIONS FOR

| | | | |
|------|-----------|-------|---------|
| 1955 | CHEVROLET | MODEL | 987086 |
| 1955 | CHEVROLET | MODEL | 987087 |
| 1955 | CHEVROLET | MODEL | 987088 |
| 1956 | CHEVROLET | MODEL | 987364 |
| 1956 | CHEVROLET | MODEL | 987366 |
| 1956 | CHEVROLET | MODEL | 987368 |
| 1956 | CHEVROLET | MODEL | 3725156 |

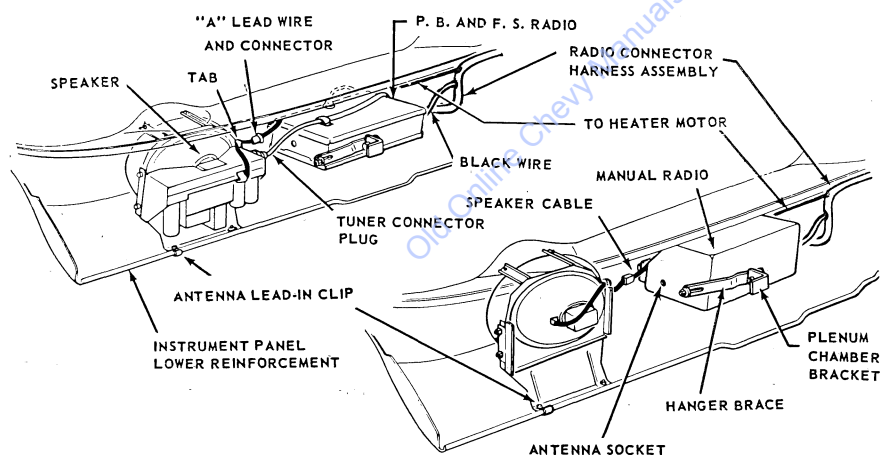


Fig. 8

1955 Chevrolet Model 987086

Suppression Equipment —

Generator Capacitor .5 mfd. (Part #1911095)

Ignition Coil Capacitor .5 mfd.
(Part #1929070)

Voltage Regulator Capacitor .5 mfd.
(Part #1917580)

Fuse 7.5 amp. (Part #455640)

Mounting—

The radio is held in place by a stud on the right side of the radio. The speaker unit is held in place by two brackets at the top of the speaker frame and two mounting holes at bottom.

The "A" lead goes to junction block at the left side under the dash.

Static collectors are installed on both front wheels (Part #6009)

1955 Chevrolet Model 987087—Same as 987086

1955 Chevrolet Model 987088—Same as 987086

1956 Chevrolet Model 987364—Same as 987086

1956 Chevrolet Model 987366—Same as 987086 except for "A" lead which is plastic plug in on left side of set.

1956 Chevrolet Model 987368—Same as 987086

1956 Chevrolet Model 3725156—Same as 987086

Contributed by Gene Thompson

DELCO AUTO RADIO INSTALLATION BULLETIN

SUBJECT: INSTALLATION INSTRUCTIONS FOR

1955-6 CHEVROLET MODEL 987187

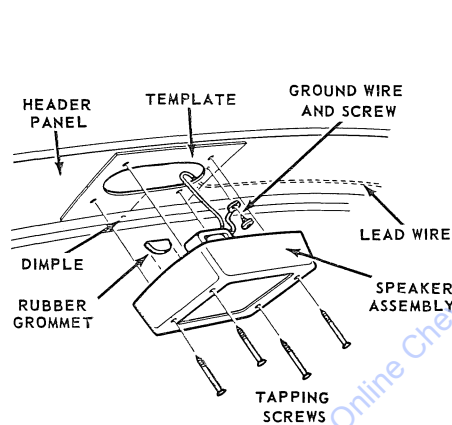


Fig. 9

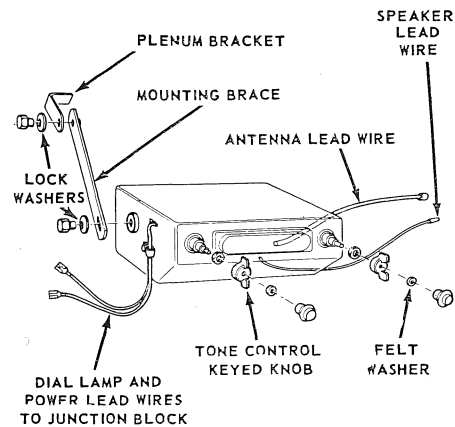


Fig. 9A

1955-6 Chevrolet Truck Model 987187

The receiver is mounted same way as Model 987086 car radio. Exception is that speaker unit is mounted up over head on header panel by 4 self-tapping screws and ground screw as shown above.