



UNITED MOTORS SERVICE
 DIVISION OF
GENERAL MOTORS CORPORATION
 GENERAL OFFICES—DETROIT
AUTO RADIO BULLETIN

BULLETIN 6 D-821
 Chevrolet 985254

Date: 8-29-47
 Page 1

Supersedes Issue Of
 12-1-41

SUBJECT--SERVICE INSTRUCTIONS
Chevrolet Model 985254 Auto Radio

GENERAL

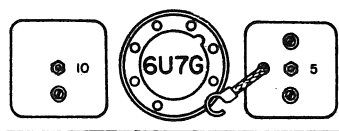
Mounting - Custom 1937 Chevrolet
 Type - Two Unit Set
 Tubes - Six
 Speaker - 5 $\frac{1}{2}$ " Dynamic
 Tone Control - Mounted on Dome
 Speaker
 Intermediate Freq. - 262 Kc
 Tuning Range - 540/1530 Kc

ALIGNMENT PROCEDURE

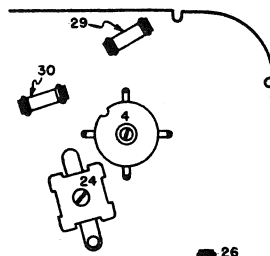
To properly align this receiver, a calibrated Test Oscillator or Signal Generator and Output Meter or Output Indicator are required. All adjustments should be made with the Volume Control set for maximum volume, keeping the Signal Generator output at minimum for satisfactory output indication. Tone Control to be in treble position.

Series Cond. or Dummy Antenna	Connection at Radio	Set Generator At	Tune Receiver To	Adjust Screws At	To Obtain
.1 Mfd.	6A8G Grid	262 Kc	No Broadcast Signal	10 2nd IF trimmers 1st IF 5 trimmers	Max. Output
		1530 Kc	high freq gang stop	11C Osc trimmer	
		540 Kc	low freq gang stop	24 Osc padder	
.002 Mfd.	Antenna	1400 Kc	Signal Generator	11B RF trimmer	
		600 Kc	Signal Generator	Osc 24 padder	

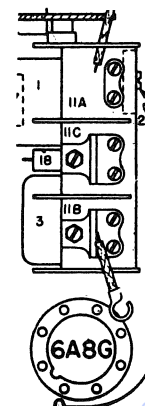
Adjust trimmer 23 to match car antenna (1400Kc) when set is installed.



IF trimmers



Osc padder (24)



Ant, RF & Osc trimmers

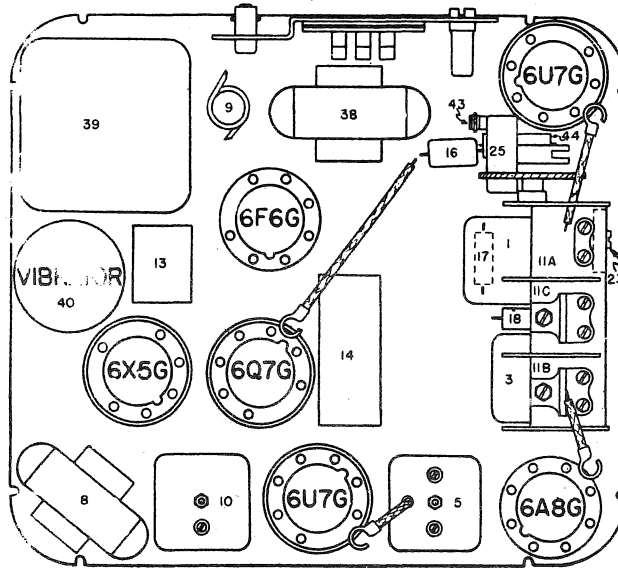


FIG. 2--PARTS LAYOUT--Top View

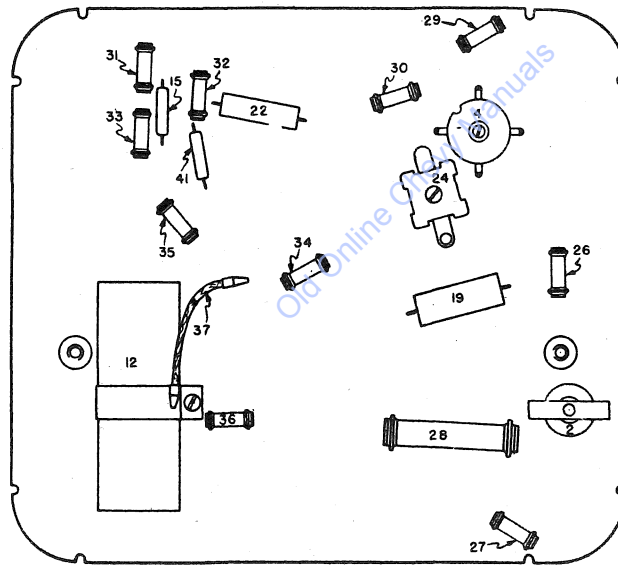


FIG. 3--PARTS LAYOUT--Bottom View

TUBE SOCKET VOLTAGES

Type	Function	H	P	S	Gs	G1	G2	K
6U7G	R-F Amp.	5.8	230	60	2.5	-	-	2.5
6A8G	Det-Osc	5.8	230	60	-	3.0	60	2.5
6U7G	I-F Amp.	5.8	230	60	5.0	-	-	5.0
6Q7G	Det-A-F.	5.8	80	-	-	-	-	1.2
6F6G	Output	5.9	230	230	-	-	-	14.0
6X5G	Rectifier	5.8	-	-	-	-	-	240

Above readings taken from tube socket contacts to ground with a DC voltmeter having a resistance of 1000 ohms per volt.

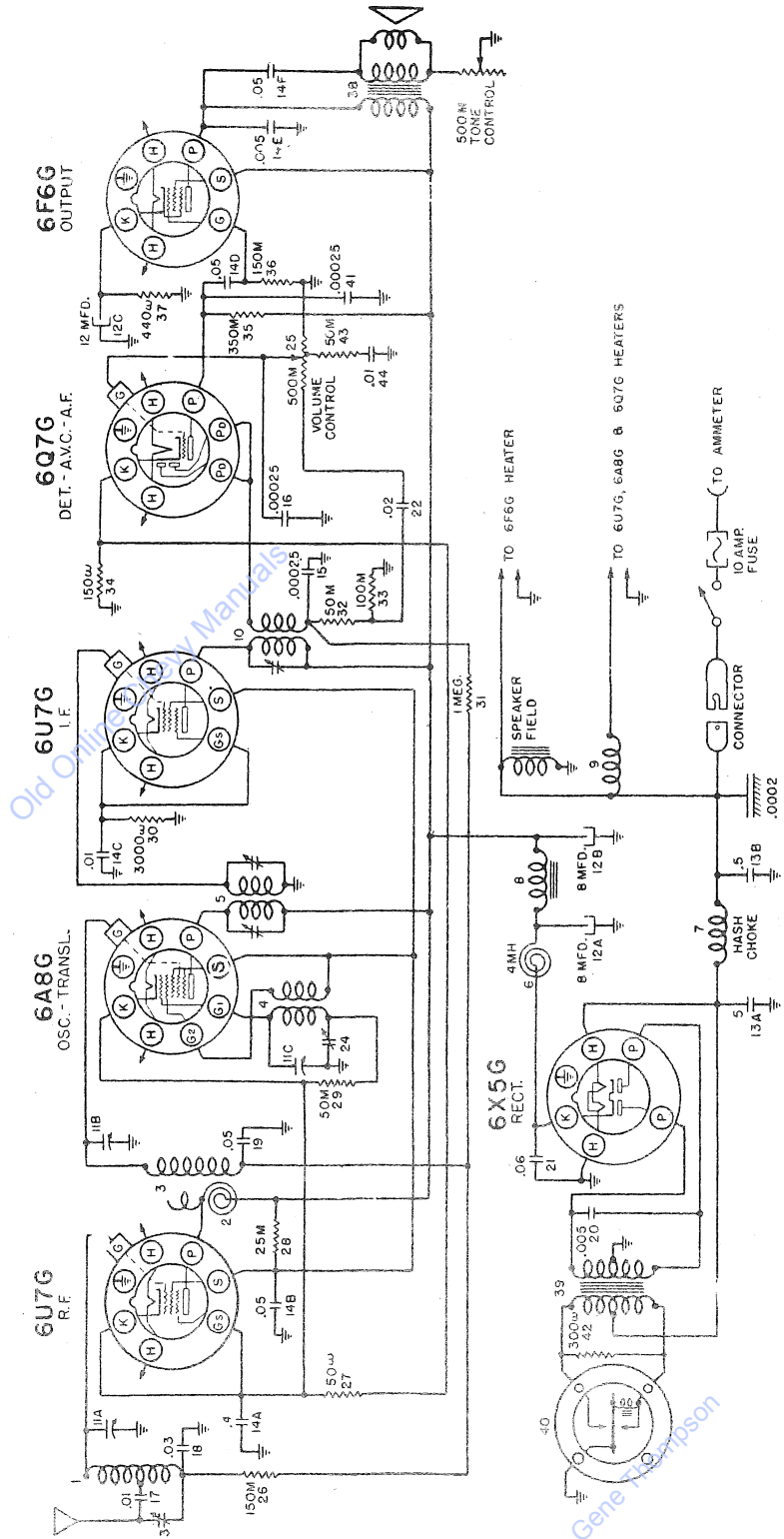
Current drain 6.8 amperes. "B" supply drain approx. 52 Ma.

Contributed by Gene Thompson



UNITED MOTORS SERVICE
 DIVISION OF
GENERAL MOTORS CORPORATION
 GENERAL OFFICES—DETROIT
AUTO RADIO BULLETIN

BULLETIN 6 D-821
 Chevrolet 985254
 Date: 8-29-47
 Page 3



(2302 PD 8-47)

(OVER)

(Printed in U.S.A.)

FIG. 1--CHEVROLET MODEL 985254 CIRCUIT DIAGRAM

Contributed by Gene Fitzsimon

SERVICE PARTS LIST

Illus. No.	Service Part No.	Description	Illus. No.	Service Part No.	Description
CONDENSERS			RESISTORS		
12		8-8-12 Mfd electrolytic	26,36	A154	150,000 Ohm $\frac{1}{2}$ watt Ins
13		.5-.5 Mfd 160 V	27	A470	50 Ohm $\frac{1}{2}$ watt Ins
14		by-pass block	28	A273	25,000 Ohm $\frac{1}{2}$ watt Ins
15,16	G221	.00025 Mfd molded	29,32	A473	50,000 Ohm $\frac{1}{2}$ watt Ins
17	E103	.01 Mfd tub	30	A272	3000 Ohm $\frac{1}{2}$ watt Ins
18	E303	.03 Mfd tub	31	A105	1 Megohm $\frac{1}{2}$ watt Ins
19	E503	.05 Mfd tub	33	A104	100,000 Ohms $\frac{1}{2}$ watt Ins
20	H502	.005 Mfd buffer	34	A151	150 Ohm $\frac{1}{2}$ watt Ins
21	E603	.06 Mfd tub	35	A335	350,000 Ohm $\frac{1}{2}$ watt Ins
22	E203	.02 Mfd tub	37		440 Ohm flexohm 1 watt
44	E103	.01 Mfd tub	42	A271	300 Ohm $\frac{1}{2}$ watt Ins
			43	A473	50,000 Ohm $\frac{1}{2}$ watt Ins
			40	8528	Vibrator

Old Online Chevy Manuals

Contributed by Gene Thompson